

**ENTRY FORM**

Complete all sections. Please print. Attach entire form to back of work. Please duplicate form for 2nd entry, or go to: [www.granbylandtrust.org](http://www.granbylandtrust.org) for downloadable forms. Extra forms also available at gallery during drop-off.

**Entry Copy**

Name \_\_\_\_\_  
Phone \_\_\_\_\_  
Title \_\_\_\_\_  
Medium \_\_\_\_\_  
Price \_\_\_\_\_

**File Copy**

Name \_\_\_\_\_  
Address \_\_\_\_\_  
City, State, Zip \_\_\_\_\_  
Phone \_\_\_\_\_  
Email \_\_\_\_\_  
Number of Entries \_\_\_\_\_ of \_\_\_\_\_  
Title \_\_\_\_\_  
Work Inspired by (location) \_\_\_\_\_

Medium \_\_\_\_\_  
Price \_\_\_\_\_

*I agree to conditions set forth in prospectus.*

Signature \_\_\_\_\_  
Date \_\_\_\_\_

**Artist's Notification**

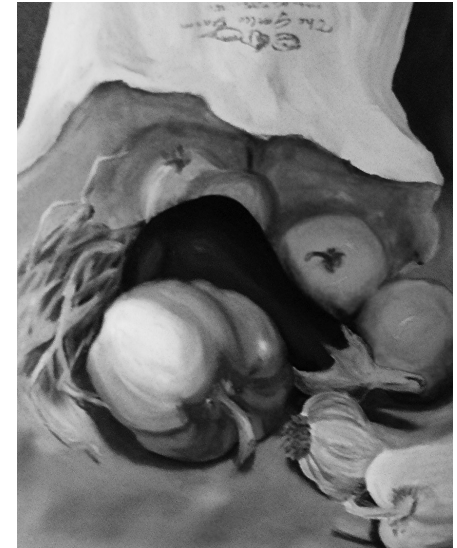
Name \_\_\_\_\_  
Title \_\_\_\_\_

Accepted     Declined

*The Granby Land Trust  
presents  
Granby's Farms & Orchards  
A Juried Art Show*

**The Granby Land Trust**  
c/o  
J. Vallee Brunelle  
Fine Art & Framing  
10 Hartford Ave.  
Granby, CT 06035

*The Granby Land Trust  
presents  
Granby's Farms & Orchards*



**A Juried Art Show**

*Sponsored by  
and to Benefit the*

**Granby Land Trust**

*In partnership with the*  
**Granby Artists Association**

**November 1 - 30, 2007**

J. Vallee Brunelle  
Fine Art & Framing  
10 Hartford Avenue (Route 189)  
Granby, CT 06035  
860.844.0277

### Entry Requirements:

**Entries must be original two or three-dimensional work, inspired by a Farm, Agricultural Scene or Orchard in Granby, CT.**

Suggested Granby farm and orchard locations with brief descriptions may be found at the Granby Land Trust web site, [www.GranbyLandTrust.org](http://www.GranbyLandTrust.org), or by contacting Rosemarie Mendes at [ramusic@cox.net](mailto:ramusic@cox.net) or 860-653-0566.

Entries submitted for the Granby's Farms and Orchards Show will be **juried for entry and prizes**.

Each artist is limited to **2 entries**. A non-refundable fee of \$20 is charged for one entry, \$30 for two entries. Seniors over 60 pay a discounted fee of \$15 and \$25 respectively. Make checks payable to "Granby Land Trust".

2-D work must be framed and securely wired for hanging. No saw tooth hangers or clip mountings will be accepted. Size must not exceed 36" in either direction. 3-D work must be freestanding or mounted to be freestanding. Please include your own pedestal if needed. Size must not exceed 24" in width or depth, 60" in height or 50 lbs. in weight. Jewelry must include a presentation case or display of some kind. *Any work not meeting these specifications will not be accepted.*

A completed entry form must accompany each entry, along with a self-addressed, stamped envelope. Additional entry forms can be found at [www.GranbyLandTrust.org](http://www.GranbyLandTrust.org).

**Dates & Location of Exhibition:** November 1 through November 30, 2007 at J. Vallee Brunelle Fine Art & Framing, 10 Hartford Avenue, Granby, CT, 860.844.0277

**Drop-off Dates:** J. Vallee Brunelle Fine Art and Framing, on Saturday, October 20 from 11:00AM to 3:00PM and Monday, October 22 from Noon until 2:00PM.

**Declined Work:** Must be picked-up on Saturday, October 27 from 11:00AM to 3:00PM at J. Vallee Brunelle.

**Sales:** All work must be available for sale. 60% of sales will be returned to the artist with the remainder of the proceeds going to support the event and to benefit the Granby Land Trust.

### The Awards

\$500 Don and Marty Wilmot Award  
\$500 Granby Land Trust Award  
\$500 Granby Community Fund Award  
\$250 Ray Betts Award  
\$250 Nannie & Put Brown Award  
\$250 Mildred Dewey Award  
\$250 Tudor and Laura Holcomb Award  
\$250 Matthew K. Orluk Award  
\$250 Olof Stevenson Award  
\$250 Paul Zelanski Juror's Award  
\$100 Cormier Family Award  
\$100 Dave and Judy Russell Award  
\$100 Granby Artists Association Award

**Opening Reception:** Thursday, November 1, at J. Vallee Brunelle from 5:00PM to 8:00PM. Prizes will be awarded at that time.

**Pick-up Date:** Saturday, December 1 from 11:00 AM to 3:00PM at J.Vallee Brunelle, Fine Art & Framing.

### About Juror Paul Zelanski

We are honored to have Paul Zelanski, Professor Emeritus of the University of Connecticut as our juror this year. Mr. Zelanski was instrumental in the introduction of many innovative programs at UCONN, which included the first color theory and graphic design classes, and in the formation of the computer graphics program in the early 1980s. His published works include; *The Art of Seeing, Design Principles and Problems, Color, and Shaping Space*.

Paul Zelanski has been honored as a distinguished Visiting Artist at the Academy of Fine Arts, Krakow, Poland; the Rijkshogeschool, Maastricht, Holland; and is an Academia Italia Fellow. Mr Zelanski has also been awarded a Lifetime Achievement Award, and is a Hall of Fame Inductee in the Connecticut Art Directors Club.

Zelanski's work has been exhibited and collected across the U.S. and Europe. The distinguished venues include, Boston Museum of Contemporary Art, Dallas Museum of Fine Art, DeCordova Museum, Slater Museum, Wadsworth Atheneum, Yale University, University of Connecticut, The Cooper Union, Fort Worth Art Center, Yale University Art Museum, and numerous corporate and private collections.

*A Special Thanks: Paul Zelanski has graciously refused any stipend for jurying our show, so the Granby Land Trust chose to create an award in Mr. Zelanski's name.*

### The Granby Land Trust

The Granby Land Trust works to preserve Granby's natural heritage through the conservation of its scenic vistas, open space corridors, wildlife habitat, ecologically sensitive areas, and agricultural land. The Granby's Farms & Orchards juried show is part of a continuing partnership between the Granby Land Trust and Granby Artists Association. Visit the Granby Land Trust website for more information: [www.GranbyLandTrust.org](http://www.GranbyLandTrust.org). For more information about the Granby Artists Association visit [www.granbyartists.org](http://www.granbyartists.org).

### Artists' Plein Air Paint Out & "Celebrating Granby's Farms & Orchards" Farm Tour, and Talk

All artists and visitors are welcome at the Wilhelm Farm at 329 North Granby Road in North Granby on Sunday, Sept. 16, from 9:00AM to 3:00PM (Rain date is Sept. 23). In addition to the ongoing Artists' Paint Out, at 12 Noon, the Granby Land Trust will present a program open to the public which includes a talk about the importance of local farms & orchards. A farm tour will follow which will also provide an opportunity to see the artists at work. Lunch may be ordered prior to the event. For more details on the tour and paint-out, and to order lunch, please go to: [www.GranbyLandTrust.org](http://www.GranbyLandTrust.org)

*This event is not a requirement for artists entering the juried show, but please join us if you can.*

### Contact

Please direct questions concerning this prospectus to Rosemarie Mendes at [ramusic@cox.net](mailto:ramusic@cox.net) or call her at 860.653.0566

### Directions to J. Vallee Brunelle Fine Art & Framing

From Route 91 take exit 40 to Route 20 West. Follow Route 20 to the traffic light at the center of Granby. Turn left onto route 10/202 South. Almost immediately, turn left again onto Route 189 South (Hartford Avenue). J. Vallee Brunelle is in the Granby Village Shops Plaza, 1/10th of a mile ahead on the left. Phone 860.844.0277

*Responsibility: Granby Land Trust, Granby Artists Association, and all companies and individuals displaying entries will exercise great care in the handling of all artists' work. However, they will not be held responsible for any loss or damage to any entries.*